

# Shuswap Trails 14<sup>th</sup> Annual 2018/2019 - Progress Report

Updated: May 20, 2019

Presented by: The Shuswap Trail Alliance  
[www.shuswaptrailalliance.com](http://www.shuswaptrailalliance.com)

Weytk. . .

You are in Secwepemc Territory. . .



## 15 years ago. . .

- Isolated local **priorities**
- 2002 Shuswap **Tourism Opportunity Strategy**
- CSRD **Parks** planning
- Pre-Olympic **priorities**
- 2005 **round table** discussion re: trails
- 2006 **feasibility** study & community **consult**
- **BC Trails** Strategy





Salmon River nature trail, Switzmalph Cultural Centre

## The Shuswap Trail **Vision**. . .

Establish the entire Shuswap Watershed as a **united destination trail centre** known for its active lifestyle, vibrant culture, natural beauty, and commitment to sustainable environment



Well designed,  
Well signed,  
Well maintained,  
Well promoted



Park Hill West Trails, Salmon Arm





Shuswap Regional Trails Roundtable planning session, Splatstin Community Centre

**Our Approach. . .**

. . .to use a participatory, relationship-based,  
community-development model

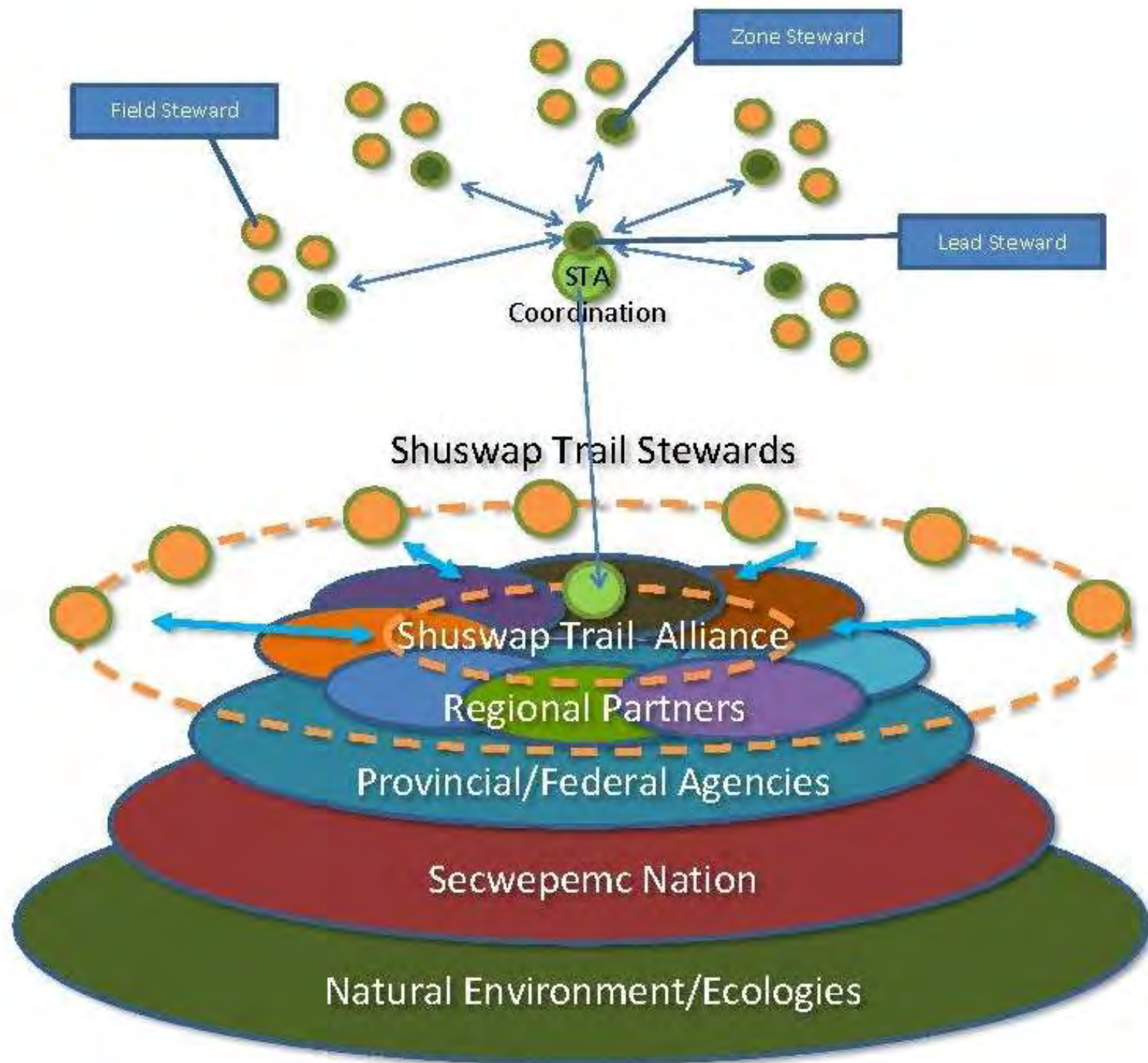


## The Shuswap Trail **Alliance**. . .

the organizational body (formed in 2005)  
through which **local and regional leadership  
work together** to develop and implement the  
Shuswap Trails Strategy. . .

. . .as First Nations, stewardship,  
government, industry, business, and  
community stewardship organizations and  
individuals.







## 5 Core Pillars. . .

1. Regional Collaboration
2. Trail Stewardship
3. Environmental Adaptive Planning
4. Experience Development
5. Capital projects/technical trail services





## Shared **tools**. . .

- Regional trail **strategy**
- Shuswap Trail **Protocol**
- Design **standards**
- **Sign** standards
- Environmental **adaptive plan**
- Trail **development team & tool room**
- Trail **stewardship** program
- Experience **programs**
- Shuswap trail **guide & website**
- [www.shuswaptrails.com](http://www.shuswaptrails.com)
- [trailreport@shuswaptrails.com](mailto:trailreport@shuswaptrails.com)



# Shuswap Trails Strategy and Roundtable

The **purpose** of the strategy is to protect, enhance and recognize trails as an integral part of the Shuswap lifestyle, culture and economy.

- ensure trails are appropriately **authorized, mapped, developed, maintained, and promoted,**
- protect and promote **First Nations interests,**
- reduce/repair **ecological** damage from all trail use,
- manage **land access** appropriately
- demonstrate **collaborative** management
- provide **stability** and **security** to all who invest in them.



November 2016 Regional Trail Strategy and Roundtable

# Working Together. . .



December 2015 Regional Trail Strategy and Roundtable

# . . .Y'icwetsutce (taking care of the land)



# The Shuswap Trail Protocol

- Weaving it Green for Generations in a spirit of respect, cooperation, and stewardship

Planning Mt Tuam Bike Trails, South Shuswap







# A few key values. . .

- Reverence
- Humility
- Respect
- Balance
- Enough
- Gratitude

## Y'icwetsutce. . .

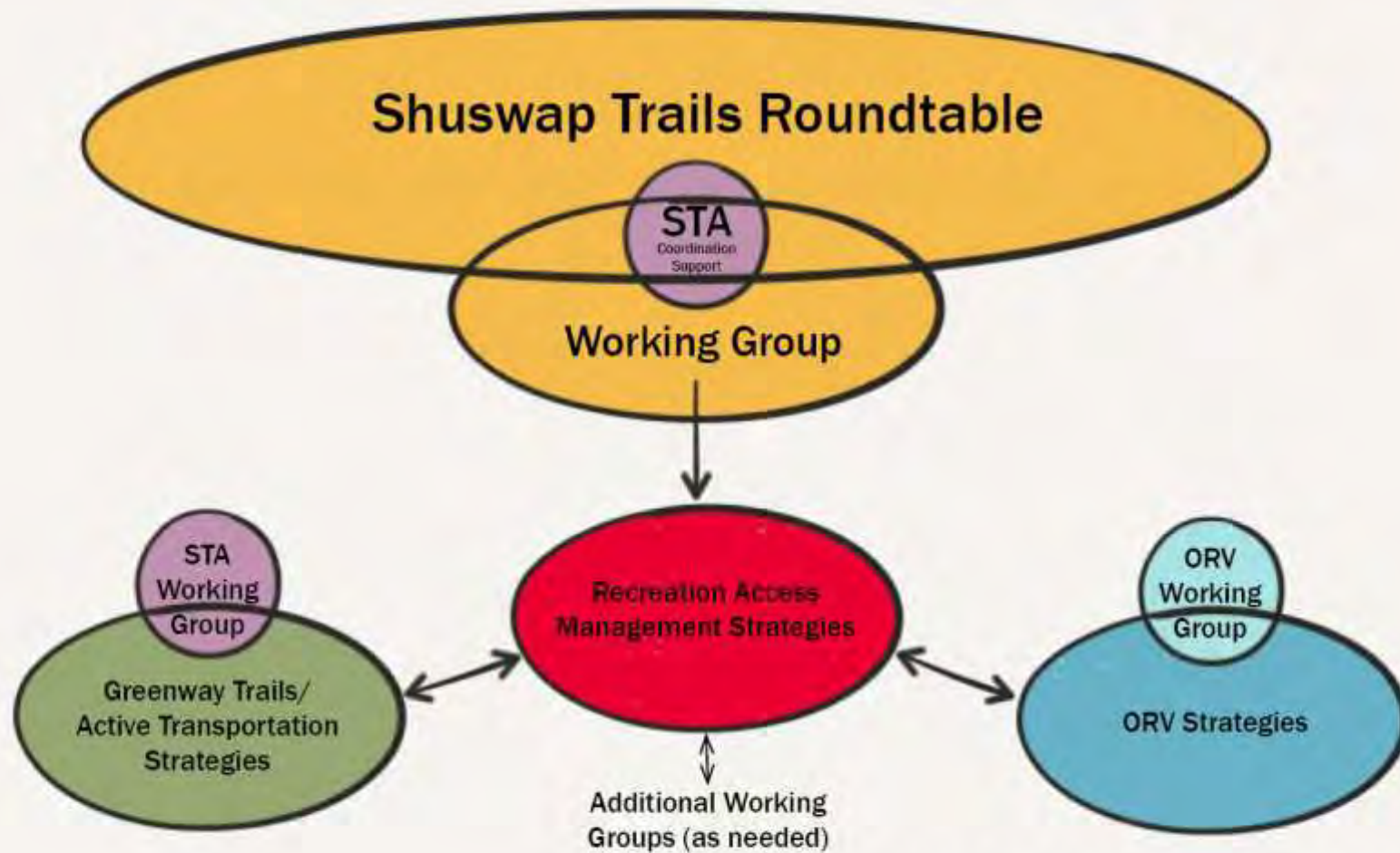




# Letter of Understanding

- Work together
- Y'icwetsutce (Stewardship)
- Recognize First Nations Title & Rights
- Collaboration
- Respect

# Shuswap Trail Strategy and Roundtable





# Pre-Authorization Process

## ④ FCBC: Review Process (NRS)

Client Fills out Application

- Check for completion
- Back to Client if incomplete
  - Resubmission

## ③ FCBC: Receive Process (CSA)

Application Complete  
Checking Acceptability

- Ensure content of application meets requirements
  - Maps, feasibility, obvious conflicts
- Back to Client for alteration
  - Resubmission

**FLNRORD:** Ministry of Forests, Lands & Natural Resource Operations

**FCBC:** Front Counter BC

**RSTBC:** Recreation Sites & Trails BC

**CSA:** Client Service Assistant

**NRS:** Natural Resource Specialist

**DRO:** District Recreation Officer

26-Oct-17

## ⑤ FCBC: Referral Process (CSA)

Application Acceptable  
Land Referral

- Status performed
- E-Referral/Consultation/Advertising package developed
- Action DRO to confirm, proceed
- Land Referral initiated

## RSTBC: ② Facilitation / Coordination (DRO)

With Front Counter BC (CSA):

- Initiating with REC#, tenure database, maps, project files, CRIF
- Identifying any additional stakeholders for referral (as required)
- Cover letter to recipients

## ⑥ Adjudication/ Administration

- Adjudication, decision
- Authorization, agreements
- Site/Trail designations

*Ministry: FLNRORD*

*Proponent & Key Stakeholder Community*

## ① Pre-Application

- Environmental screening, issue identification/ early resolutions
- Stakeholder information sharing
- Mapping & Application development
- Support documents from key stakeholders
- Field visits, communication with DRO

Proponent Group

SCREENING PROTOCOL

With Proponent:

- Collaborative review, refinements, contact other Provincial decision makers as required, issue and gap identification, field reviews

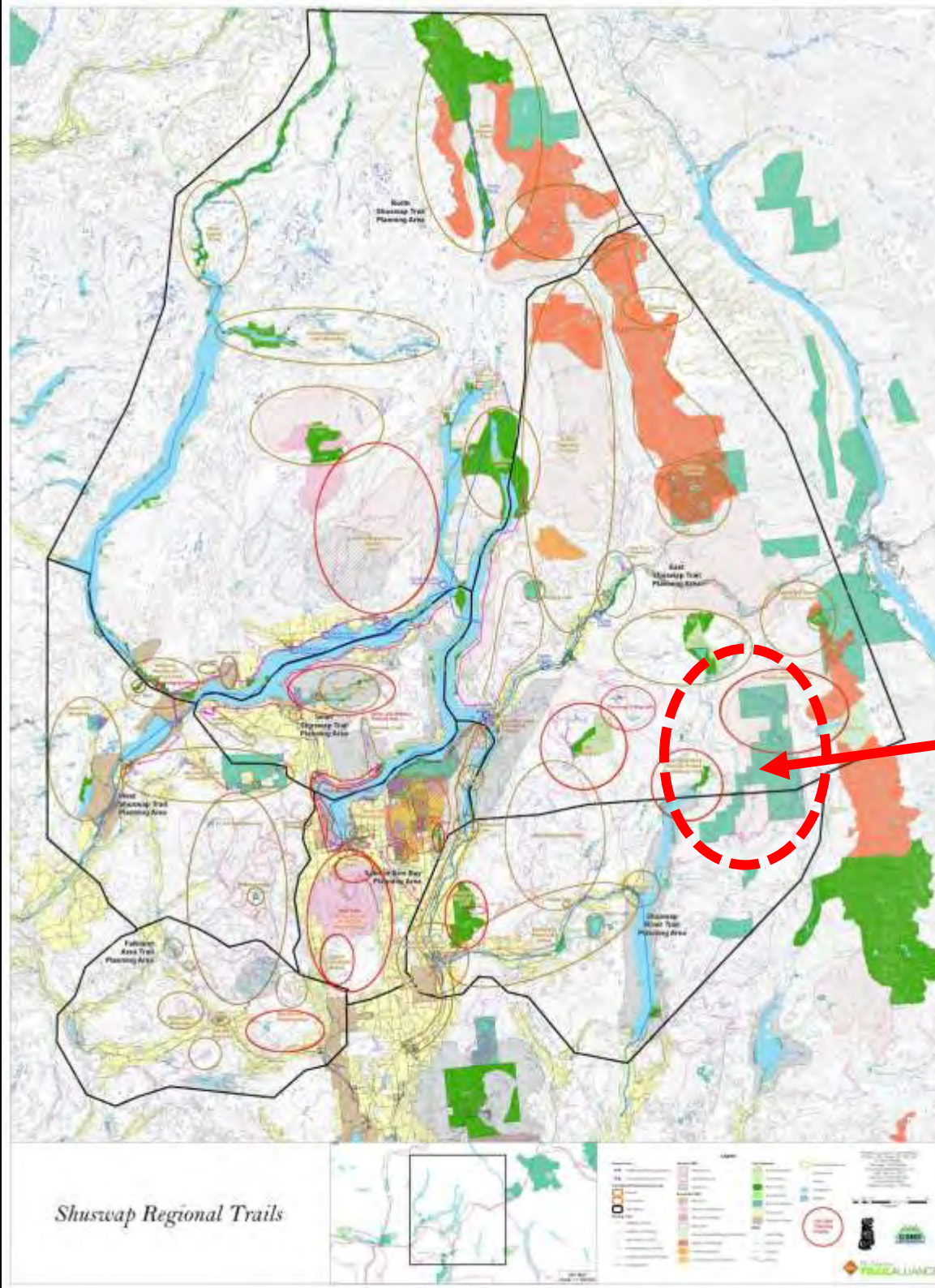
FRPA Recreation Authorizations:  
RSTBC → FCBC → RSTBC



Ministry of  
Forests, Lands, Natural  
Resource Operations  
and Rural Development

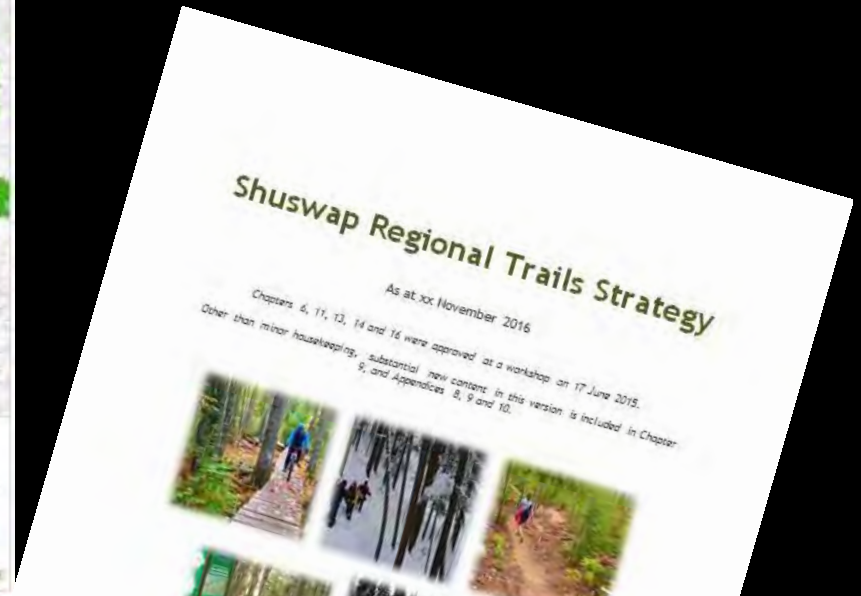
FrontCounterBC  
Recreation Sites  
and Trails BC





# Shuswap Regional Planning Priorities

Joss-Tsuius-Mabel  
Access Planning Area





# Structured Decision-Making:



**1** Clarify problem and context  
– history, current use, laws, policies, preferences

**2** Articulate values, objectives, & measures – what are the desired results (outcomes) and measures?

**3** Develop options – what are the alternative management recommendations or scenarios?

**4** Evaluate consequences – what are the potential results/risks of each option? Asking:

- What do we already know?
- What do we still need to know?
- How will we get this knowledge? (and is it feasible?)

Cumulative  
Effects  
**Data &  
Modelling**

**5** Evaluate trade-offs and choose – Are the trade-offs/risks acceptable? What are the limits to monitor?

**6** Take action – implement, monitor, review, and adapt

# Shuswap Regional Trails Roundtable



**Next Roundtable** – Feb. 13<sup>th</sup> at Sicamous Rec Centre



# The **outcome** ~ with partners ~ since 2006. . .

- Over **350** greenway trail projects together. . .
- **11 signature** trail systems, **105** regional trails
- **125 km** of new trails **valued** over **\$2.25 million**
- Over **1560** trail **signs**, 6000 blazes, 25 kiosks
- Emerging four-season trail based **marketing**
- \$4,860,000 in **leveraged cash/in-kind** investment



Scotch Creek Hlina Lookout Trail, North Shuswap

## And in 2018 we worked on. . .

- over 70 projects with over 50 partners
- built 5 new trails totaling 3436 meters
- 238,725 m maintenance/790 m repaired
- 3 new boardwalks & bridges, 2 set stairs
- 79 new trail signs, 4 retain walls, 1 culvert
- 82,426 meters planned, 34 new trail plans
- 62 volunteer days, 424 people, 200 youth
- 5 recreational access plans
- 4 conservation projects
- 2 legacy trail concept proposals
- 1 international partnership







**5** new trails





# 73 new signs







**10** structures



# - maintenance







- planning. . .





- partnerships



# - partnerships





# - conservation projects







## What Do You See?

Pictographs in Secwepemc  
First Nation Territory

Pictographs are ancient rock art created by indigenous peoples. They are often found on rock surfaces and can be made using natural pigments or minerals. Pictographs are a valuable part of our cultural heritage and provide a window into the lives of our ancestors.

The pictographs in this area are believed to be of Secwepemc origin. They were created by the Secwepemc people, who lived in the region for thousands of years. The pictographs are a testament to the skill and creativity of our ancestors.

The pictographs in this area are a valuable part of our cultural heritage. They provide a window into the lives of our ancestors and are a testament to the skill and creativity of our people.

The pictographs in this area are a valuable part of our cultural heritage. They provide a window into the lives of our ancestors and are a testament to the skill and creativity of our people.

The pictographs in this area are a valuable part of our cultural heritage. They provide a window into the lives of our ancestors and are a testament to the skill and creativity of our people.

The pictographs in this area are a valuable part of our cultural heritage. They provide a window into the lives of our ancestors and are a testament to the skill and creativity of our people.

The pictographs in this area are a valuable part of our cultural heritage. They provide a window into the lives of our ancestors and are a testament to the skill and creativity of our people.



# Shared promotion. . .





## 2 TrailRiders + 1 SandRider





# 1 Western Canadian Trail Event



Lewiston Ultra Trail Run, 2018, linking Sicamous and Salmon Arm via the Larch Hills Traverse



# 1 International Partnership





...continuing!



Shuswap Trail Alliance Technical Trail Specialist, Jacob "Sutra" Brett, on assignment in Torres del Paine, Patagonia, Chile. January 2019



And **Champions**...



























































FRUIT ALLIANCE  
CLYDE WALTERS  
HAND MADE CEDAR BURR TABLE  
VALUE: \$450.00

FRUIT ALLIANCE  
CLYDE WALTERS  
HAND MADE CEDAR BURR TABLE  
VALUE: \$450.00

FRUIT ALLIANCE  
CLYDE WALTERS  
HAND MADE CEDAR BURR TABLE  
VALUE: \$450.00























































Working Together. . .





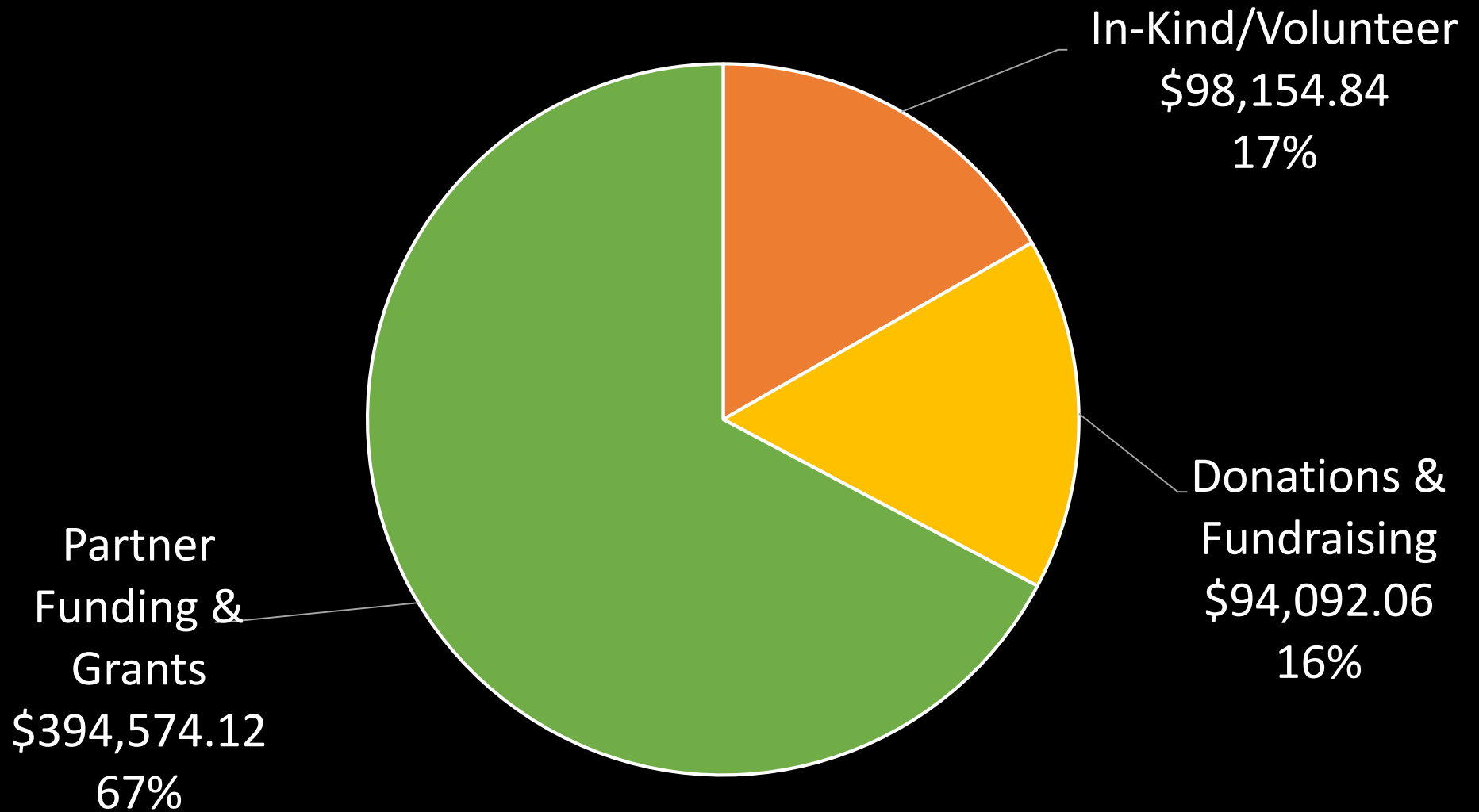
Site reconnaissance at Haines Creek Bluffs

# Leveraged Resources 2018. . .

- BC Parks – Parks Enhancement Fund
- BC Rural Dividend Program (MFLNRO)
- BC Timber Sales
- Backcountry Horsemen of BC – Shuswap & North Ok.
- Bike-for-Your-Life
- Canada Summer Jobs
- Community Fundraising
- CSRD Parks Area C, D, E, F
- City of Salmon Arm
- City of Enderby/RDNO Area F Parks
- Columbia Shuswap Invasive Species Soc.
- District of Sicamous
- EQ Trails Association
- Horse Council of BC
- North Shuswap Lions Club
- Recreation Sites and Trails BC
- Salmon Arm MRDT Funding (Hotel Tax)
- Shuswap Bike Club
- Shuswap Community Foundation
- Shuswap Lady Striders
- Shuswap Tourism
- And Community, Volunteers, In-kind



## 2018 Total Value: \$586,821





# STA Operational Fixed Costs: \$170,000/year

		STATUS
City of Salmon Arm	\$40,000	confirmed
Columbia Shuswap Regional District Areas C, D, E, F	\$40,000	confirmed
City of Enderby/RDNO Area F	\$10,000	confirmed
District of Sicamous	\$5000	confirmed
Other Partners Needed. . .	\$35,000	unconfirmed
Operational Contribution from Projects & Fundraising	\$40,000	ongoing
Annual Operational Funding Commitment	\$170,000.00	

**A 4-year annual collaborative agreement**



# Regional Trails Roundtable: \$19,000/year

<i>Proposed Contributing Partners</i>	<i>Annual Budget</i>	<i>STATUS</i>
Secwepemc Lakes Governments	\$1000	<i>confirmed</i>
Province – Rec Sites & Trails BC	\$2500	<i>confirmed</i>
Province – Other Ministries	<b>\$2500</b>	<i>unconfirmed</i>
CSRD	\$1500	<i>confirmed</i>
RDNO	<b>\$1500</b>	<i>unconfirmed</i>
Salmon Arm	<b>\$1500</b>	<i>unconfirmed</i>
Chase	\$500	<i>confirmed</i>
Sicamous, Enderby. . .	<b>\$1000</b>	<i>Unconfirmed</i>
Other Partners – funding	\$1000	<i>confirmed</i>
Non-Government Sectors & Stewardship Organizations (in-kind)	\$6000	<i>confirmed</i>
<b>Total Revenue</b>		<b>\$19,000.00</b>

**x 4-year annual shared commitment**



# Looking Ahead. . .







## 2016 - 2020 **Priorities** . . .

- Mobilize **Regional Trail Roundtable** and Implement Access Management Priorities
- Grow the **Volunteer Trail Stewardship** Program and Local Trail Advisories
- Update Shuswap Greenway Trail Strategy, **Business Plan**, and Marketing Plan
- Develop and Implement Community **Active Transportation Plans**
- Advance **Community-to-Community** Trail Connectors





## Project Targets in 2019. . .

- Sicamous-Armstrong Rail Trail
- Secwepemc Landmarks Project
- South Shuswap Destination Trails Plan
- East Shuswap Alpine Rec Access Plan
- Enderby Cliffs Tplaqin Trail repairs
- Larch Hills Traverse East Trailhead
- South Canoe Trailhead & Additions
- Rubberhead Additions
- Kela7scen (Mt Ida) Plan
- West Bay Trail Corridor Plan
- Glenemma Trails Plan
- Scatchard Mtn Rocky Road Trail
- North Shuswap Lee Creek Trail Plan
- Shuswap Mountain Bike Mini-Guide
- . . .Enderby & Area. . .
- and more, watch for updates. . .



2019 . . .

Sicamous-Armstrong Rail Trail

Secwepemc Landmarks Project

South Shuswap Destination Trails Plan

East Shuswap Alpine Rec Access Plan

Enderby Cliffs Tplaqin Trail repairs

Larch Hills Traverse East Trailhead

South Canoe Trailhead & Additions

Rubberhead Additions

Kela7scen (Mt Ida) Plan

West Bay Trail Corridor Plan

Glenemma Trails Plan

Scatchard Mtn Rocky Road Trail

North Shuswap Lee Creek Trail Plan

Shuswap Mountain Bike Mini-Guide

Enderby & Area Parks & Trails





# Calendar Highlights 2019. . .

- Roundtable Working Group - quarterly
- Trail Planning – in progress
- Trail Crew Hiring – March/April
- Trail Stewards Training – April/May
- Volunteer Trail Days Start – April
- Shuswap Trail Crew active – May-Oct
- Fall Trail Stewards Review – Nov 2
- Shuswap Trails Roundtable – Nov TBA
- And. . .





# Sicamous-to-Armstrong Rail **Trail** Corridor. . .



Abandoned rail corridor through Enderby



# Sicamous-to-Armstrong Rail **Trail** Corridor. . .



Abandoned rail corridor along west shores of Mara Lake viewed from the Hyde Mountain Lookout



# West Bay Connector **Pathway**. . .



Looking east from Switzmalph to Salmon Arm along Rail Corridor during spring high water.

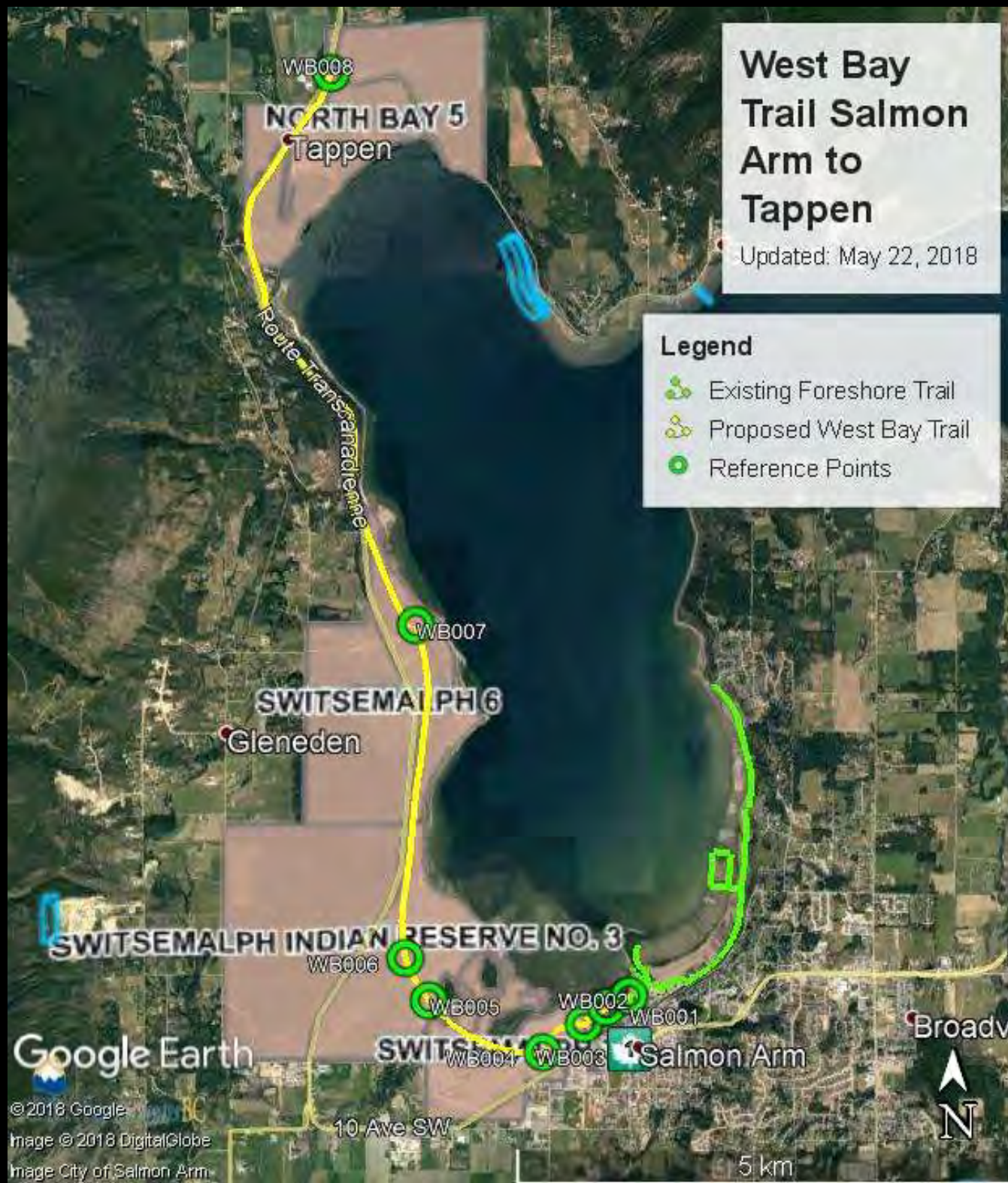


# West Bay Trail Salmon Arm to Tappen

Updated: May 22, 2018

## Legend

- Existing Foreshore Trail
- Proposed West Bay Trail
- Reference Points





# West Bay Connector Pathway. . .

## West Bay Salmon Arm to Switzmalph - OVERVIEW: FOR DISCUSSION ONLY

Overview of Hwy 1 Twinning, Switzmalph Centre Connector, and West Bay Trail Corridor Concept

### Legend

- Feature 1
- Salmon Arm Wharf
- Section
- Switzmalph Cultural Centre Nature Trail





# Active Transportation Planning. . .



Looking down above Chase on the Scatchard Mountain Road trail



# Secwepemc Landmarks Project. . .



Concept examples from the Secwepemc Landmarks and Trailheads project





## ACTION

- Use the trails
- Tell others about the trails
- Join a local trail organization
- Speak with our elected officials
- Become an Alliance member
- Volunteer – become a steward
- Make a charitable contribution



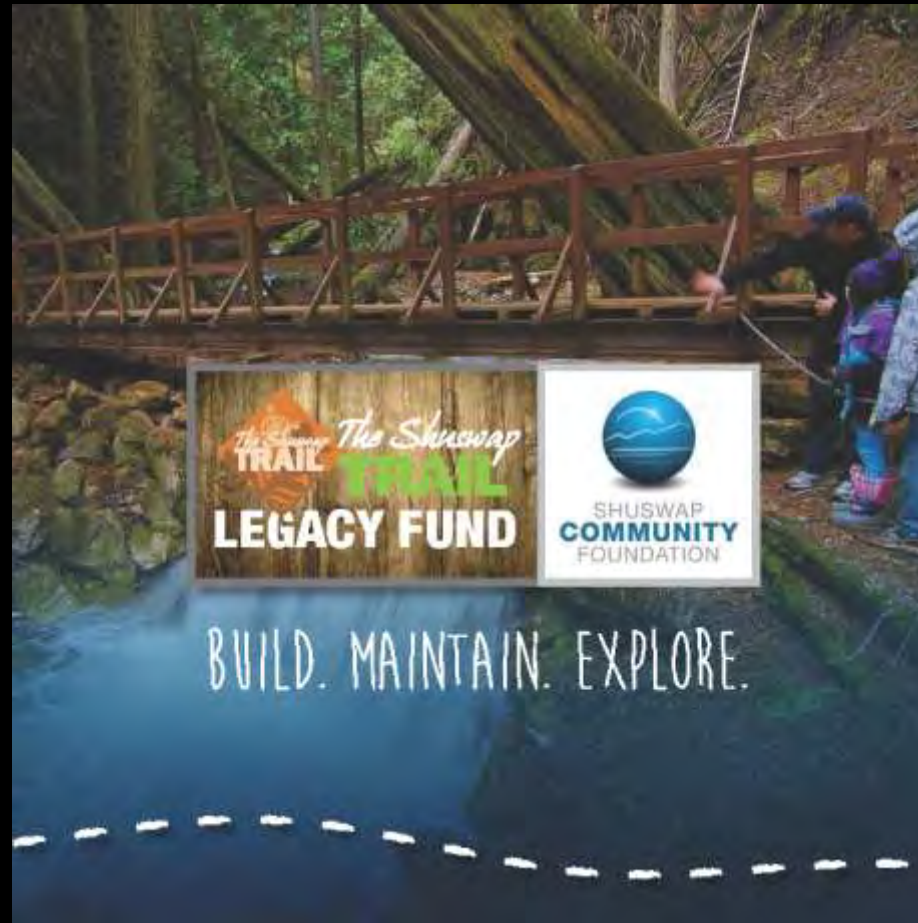


## Join the Collaboration

- Shuswap Trails Roundtable LoU
- 4-year Roundtable Co-Funder
- 4-year STA Operational Partner
- Leverage Project Partnerships



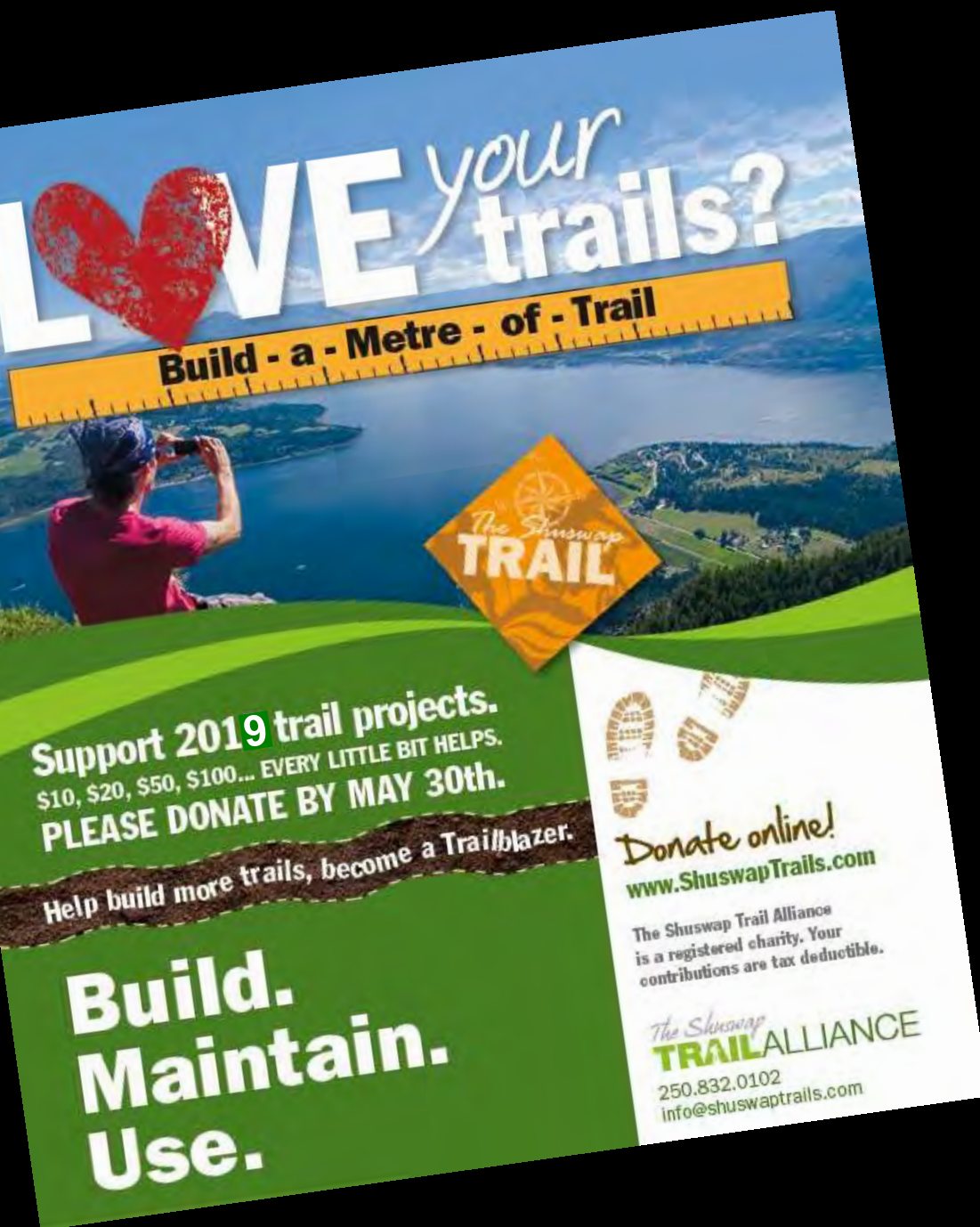
# Shuswap Trail Legacy Fund



[www.shuswapfoundation.ca](http://www.shuswapfoundation.ca)







## Love Your Trails. . .

Help build trails in 2019

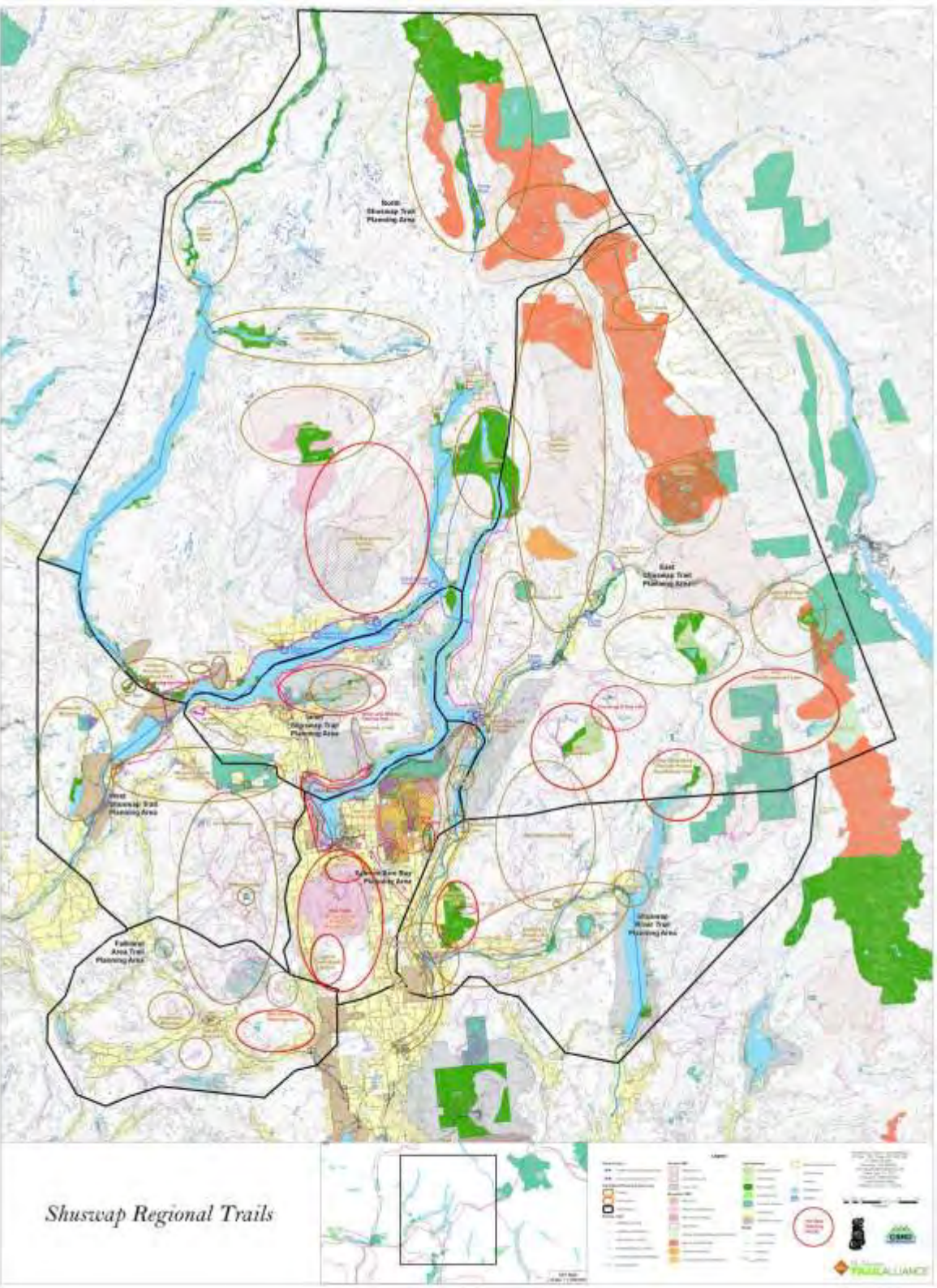
- \$5 posts a blaze
- \$10 digs the tread
- \$20\* buffs a whole metre
- \$50\* caps it in gravel
- \$100\* decks it with boardwalk

Make your contribution at. . .

[www.shuswaptrails.com](http://www.shuswaptrails.com)



[www.shuswaptrails.com](http://www.shuswaptrails.com)







Kukwstsemc ~ Thank **you!**

Please visit. . .

**ShuswapTrails.com**